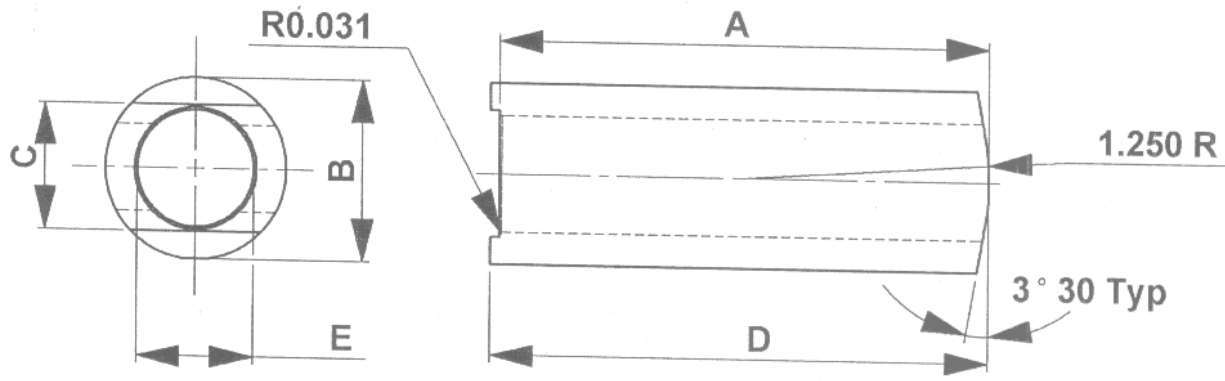


TECHNICAL SPECIFICATIONS King Pin Boss Camber Sleeve



King Pin Boss Camber Sleeve						
Part No.	A	B	C	D	E	RETAIL
BESTUB2050	1.990	1.375	1.128	2.050	.9855	\$13.60
BESTUB2670	2.610	1.375	1.128	2.670	.9855	\$13.60
CAST2.67MD	2.610	1.500	1.128	2.670	.9855	\$18.00

Disclaimer:

Seals-it takes no responsibility for the suitability of the parts to any application to which they may be put. Seals-it will not be responsible for any contingent, incidental or consequential damages of any kind whatsoever.